

---

encouraging lifetime **learning** and **reading** habits among **african children**

---



## Annual Report



June 2009

*Dear Friends of Wings of the Dawn:*

*This has been an exciting year for Wings of the Dawn. In the history of our organization for the past 12 years, this fiscal year alone we shipped over 120,000 educational materials to three African countries Nigeria, Ghana and Kenya. Although as we continue to face economic challenge I am filled with enthusiasm and hope for what is in store for us in the future. Every year when we take a field trip to project site in Africa, I always come back refreshed. One can feel and experience the great work our committed volunteer members are doing to effect change in the lives of African children and families through our program.*

*As much as I am truly convinced that we are touching and changing lives through our program, Wings of the Dawn mission is as strong today as it was twelve years ago. As we unveil the New Year with the implementation of our Book Café project in Fort Worth, Nigeria as well as working in partnership with CEDSI Nigeria in the Niger Delta region to support multiple resource center project. Due to large request for materials to support several rural library project managed by Peace Corp volunteers and other Ngo's, our partnership with Thriftbooks has enable us to continue to meet this demand for materials as well as expand our program to other African countries. Our partnership with Thriftbooks has not only enable us to meet this demand for materials but also help to streamline Wings of the dawn supply chain logistics of moving these materials from applicable warehouse to recipient countries in Africa.*

*As we end the year I want to thank the board, members, volunteers, donors and partners for empowering all of us to be able to meet the needs of these African families by providing access to instructional, educational materials to improve literacy.*

*Thank you to all the friends of Wings of the Dawn*

*Sincerely yours,*



*Ade Otenaike  
President, Wings of the Dawn  
International Institute for Children*

# Enohia Project Story

We invite you to read the story about Enohia Migrant Fisherman Primary School Project.

## **Brief description of the project: Enohia Migrant Fisherman Primary School**

Wings of the Dawn, has embark on a collaborative partnership effort with Enohia Community to assist in the completion of a six block elementary school in the village of Enohia Nkalu, Afikpo, Nigeria. This collaborative effort will involve sourcing for needed funds, provision of educational materials and supplies as well as related instructional workshops provided by students and educators from the United States of America.

## **The School Story**

Currently the school is being housed in two uncompleted personal (residential) buildings that the owners have kindly allowed the community to use temporarily for the school. The community sold some of the community owned land to get the project off the ground tasking themselves heavily to build a classroom block to be able to accommodate the increasing number of students in the school. The project goal has become difficult to accomplish because of the combination of a small population of the community and poverty. So the community has reached out to us help meet the need of improving literacy in rural communities of Africa in our ongoing effort to continue to stimulate and encourage lifelong reading and learning habit among the children of Africa. Our partnership with thriftbooks will enable us to setup a complete library upon completion of the building.

## **Enohia Nkalu Demographics**

Enohia Migrant Fisherman Primary School is in the village of Enohia Nkalu, Afikpo, Nigeria, the village is the smallest in the local government area situated in the extreme East of the Niger Delta State about 10 kilometers from the majority of other villages (so more or less isolated), separated from Cross River State by cross river. The population at the last census was 5654, of mainly younger age groups because of adult mortality for obvious reasons. More than 90% of the adult working groups are fishermen, who travel to River Niger or some of its tributaries in the Rivers State to fish. They come back to the village only during the heavy rains (July to September). The primary school being sponsored by the village, with a pupil size of about 300, is called Enohia Migrant Fishermen Primary School.

## **Estimated Cost to Complete Project**

**3,037,860 Nigerian Naira = 19,386.5 US Dollar + 20% AOC 3877.3 = 23,263.8 US Dollar**

*8/2/2009 Market Conversion Rate = 1 US Dollar (USD) = 156.700*

*Nigerian Naira (NGN)*

**Migrant Fisherman Primary School Today**



**Temporary Classroom Building**



**Classroom A View**



**Classroom B view**



**Makeshift School Toilet**



**New Building Front Elevation View**



**New Building Roof Top View**

## ABOUT WINGS OF THE DAWN

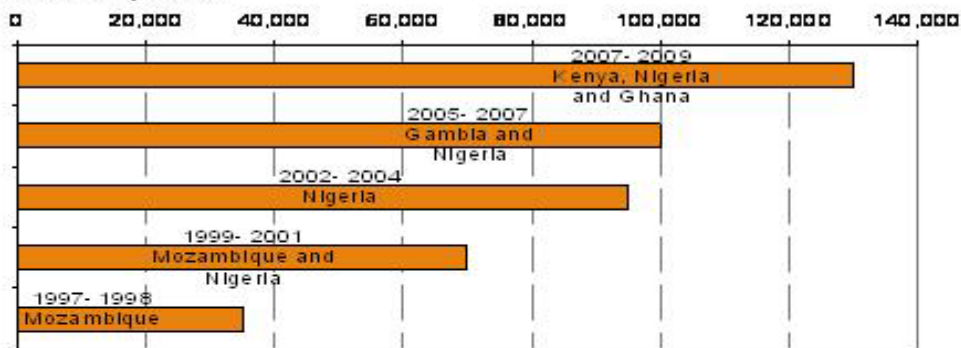
Wings of the Dawn International Institute for Children (WoD) is the lead organization in the United States establishing lifelong learning centers in rural communities throughout Africa. Founded in December 1996, WoD currently operates projects in Gambia, Nigeria, Ghana, Kenya and Mozambique. WoD is a 501c3 not-for-profit organization headquartered in Fort Worth, Texas.

In our 13<sup>th</sup> year of providing access to quality educational resources to African children, while promoting awareness as a goodwill ambassador for the United States. During this time we established the first temporary Self-Sustainable Learning Center in Gambia, started a pilot Book Café project in Nigeria and shipped over 400,000 donated educational materials and supplies from the United States and Brazil to Africa.

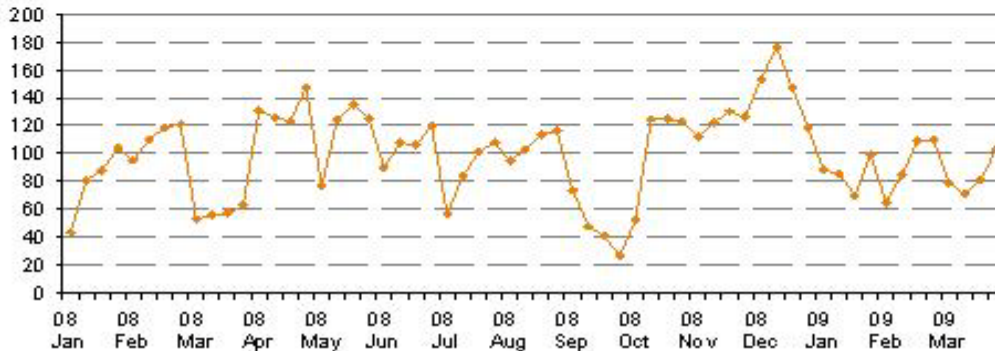
These books were distributed among schools, libraries and relief organizations in Nigeria, Mozambique, Gambia, Kenya, Gambia and Ghana. This has helped to build an economically stable and productive society in African communities by ensuring access to quality educational opportunities and materials for its citizens.

This past year has been a milestone in the history of Wings of the Dawn as we shipped material to three African countries Nigeria, Ghana and Kenya within the fiscal year; we also began a pilot Book Café project in Nigeria.

**Materials shipments**



**Mandinabz Number of library users (per week)**



## Fiscal 2007-2009 Financial Statement

	Year 2007	Year 2008	Year 2009
INCOME			
Capital Campaign			
Corporation	\$3,281.26	\$16,851.00	\$15,085.13
Individual/Board Donation	\$10,969.60	\$4,254.46	\$12,571.54
School		\$1,145.14	
Faith Based		\$ 800.00	\$ 200.00
Foundation Solicitation			\$ 6,600.00
Special Events			
<b>Total Income</b>	<b>\$14,250.86</b>	<b>\$23,050.60</b>	<b>\$34,456.67</b>
PROGRAM EXPENSE			
Banjul Gambia			
Transportation	\$ 200.00	\$ 4,025.00	\$ 0.00
Shipment	\$ 3,825.00	\$ 390.58	\$ 0.00
Sorting	\$ 265.00	\$ 0.00	\$ 0.00
Port Transportation	\$ 350.00	\$ 150.00	\$ 0.00
Program Officer Fund	\$ 710.00	\$ 0.00	\$ 0.00
<b>Total: Gambia Shipment</b>	<b>\$ 5,350.00</b>	<b>\$ 4,565.58</b>	<b>\$ 0.00</b>
Kenya/Ghana			
Transportation	\$ 0.00	\$ 0.00	\$ 0.00
Shipment	\$ 0.00	\$ 0.00	\$ 4,500.00
Sorting	\$ 0.00	\$ 0.00	\$ 0.00
Port Transportation	\$ 0.00	\$ 0.00	\$ 0.00
Program Officer Fund	\$ 0.00	\$ 0.00	\$ 0.00
<b>Total: Kenya/Ghana</b>	<b>\$ 0.00</b>	<b>\$ 0.00</b>	<b>\$ 4,500.00</b>
Nigeria			
Transportation	\$ 0.00	\$ 2,005.86	\$ 528.00
Shipment	\$ 4,160.00	\$ 4,610.00	\$ 9,890.00
Sorting	\$ 392.73	\$ 0.00	\$ 458.30
Port Transportation	\$ 249.43	\$ 0.00	\$ 0.00
Program Officer Fund	\$ 0.00	\$ 0.00	\$ 0.00
<b>Total: Nigeria Shipment</b>	<b>\$ 4,802.16</b>	<b>\$ 6,615.86</b>	<b>\$10,876.30</b>
<b>Total: Shipping</b>	<b>\$10,152.16</b>	<b>\$11,181.44</b>	<b>\$15,376.30</b>
Inspectors Travel			
Board	\$ 0.00	\$ 800.00	\$ 1,000.00
Air Travel	\$ 0.00	\$ 1,801.60	\$ 1,369.75
Visa for 2	\$ 0.00		
Passport and other Fees	\$ 0.00	\$ 84.40	\$ 91.18
In Country Travel	\$ 0.00		\$ 464.06
<b>Total: Inspector Travel</b>	<b>\$ 0.00</b>	<b>\$ 2,686.00</b>	<b>\$ 2,924.99</b>
Adopt a School	\$ 0.00	\$ 19.27	\$ 0.00
Support	\$ 0.00		
<b>Total: Adopt a School</b>	<b>\$ 0.00</b>	<b>\$ 19.27</b>	<b>\$ 0.00</b>
Library			

Mandinaba Library	\$ 1,500.00	\$ 0.00	\$ 0.00
Lagos Resource Center		\$ 954.00	\$ 849.11
Distribution Warehouse			
<b>Total: Library</b>	<b>\$ 1,500.00</b>	<b>\$ 954.00</b>	<b>\$ 849.11</b>
<b>Total Program Expense</b>	<b>\$11,652.16</b>	<b>\$14,840.71</b>	<b>\$19,150.40</b>
CAPACITY BUILDING			
Fundraising	\$ 503.80	\$ 1,135.45	\$ 61.19
Stationary	\$ 0.00	\$ 0.00	\$ 0.00
Printing	\$ 0.00	\$ 0.00	\$ 0.00
Postage	\$ 0.00	\$ 0.00	\$ 0.00
Signage	\$ 0.00	\$ 0.00	\$ 0.00
Award/Prizes	\$ 0.00	\$ 0.00	\$ 0.00
Facilities Rental	\$ 0.00	\$ 0.00	\$ 0.00
Public Relations	\$ 0.00	\$ 0.00	\$ 0.00
<b>Total: Fundraising</b>	<b>\$ 503.80</b>	<b>\$ 1,135.45</b>	<b>\$ 61.19</b>
Administration			
Postage	\$ 245.85	\$ 0.00	\$ 132.63
Office Supplies & Stationary	\$ 248.61	\$ 0.00	\$ 842.72
Telephone & L/D	\$ 897.91	\$ 1,829.39	\$ 1,800.04
Annual Registration	\$ 55.00	\$ 25.02	\$ 25.00
Transaction Fees	\$ 89.00	\$ 0.00	\$ 50.00
Gift	\$ 42.08	\$ 0.00	\$ 0.00
Insurance	\$ 0.00	\$ 944.12	\$ 939.76
Printing and copying	\$ 0.00	\$ 0.00	\$ 136.31
Audited Financial Statements	\$ 0.00	\$ 0.00	\$ 0.00
Parking	\$ 0.00	\$ 385.00	\$ 840.00
Rent	\$ 0.00	\$ 1,369.30	\$ 2,763.60
Utilities	\$ 0.00	\$ 2,054.14	\$ 832.16
<b>Total: Administration</b>	<b>\$ 1,578.45</b>	<b>\$ 6,606.97</b>	<b>\$ 8,362.22</b>
Personnel	\$ 0.00	\$ 0.00	\$ 0.00
Executive Director	\$ 0.00	\$ 0.00	\$ 0.00
Fringe Benefits	\$ 0.00	\$ 0.00	\$ 0.00
Intern (part-time)	\$ 0.00	\$ 0.00	\$ 0.00
Consultant	\$ 0.00	\$ 0.00	\$ 0.00
Total: Personnel	\$ 0.00	\$ 0.00	\$ 0.00
<b>Total: Capacity Building</b>	<b>\$ 2,082.25</b>	<b>\$ 7,742.42</b>	<b>\$ 8,423.41</b>
<b>Total Expenses:</b>	<b>\$13,734.41</b>	<b>\$22,583.13</b>	<b>\$27,573.81</b>
<b>Net Income</b>	<b>\$ 516.45</b>	<b>\$ 467.47</b>	<b>\$ 6,882.86</b>

## Proposed FY 2010 Cash Budget

<b>INCOME</b>	
Capital Campaign	\$45,000.00
Corporate Partnership	\$34,000.00
Individual/Board Donation	\$15,000.00
Foundation Solicitation	\$20,000.00
Special Events	\$35,000.00
<b>Total Projected Income</b>	<b>\$149,000.00</b>
<b>EXPENSE</b>	
<b>PROGRAM EXPENSE</b>	
<b>Gambia</b>	
Transportation	\$600.00
Shipment	\$4,400.00
Sorting	\$320.00
Port Transportation	\$550.00
<b>Total Gambia</b>	<b>\$5,870.00</b>
<b>Nigeria</b>	
Transportation	\$600.00
Shipment	\$5,130.00
Sorting	\$320.00
Port Transportation	\$550.00
<b>Total Nigeria</b>	<b>\$6,600.00</b>
<b>Kenya</b>	
Transportation	\$600.00
Shipment	\$4,500.00
Sorting	\$320.00
Port Transportation	\$550.00
<b>Total Other Countries</b>	<b>\$5,970.00</b>
<b>Ghana</b>	
Transportation	\$600.00
Shipment	\$4,500.00
Sorting	\$320.00
Port Transportation	\$550.00
<b>Total Other Countries</b>	<b>\$5,970.00</b>
<b>Inspectors Travel</b>	
Board	\$1,400.00
Air Travel	\$3,000.00
Visa for 2	\$150.00
In Country Travel	\$1,000.00
<b>Total Inspectors Travel</b>	<b>\$5,550.00</b>
<b>Self-Sustainable Resource Center</b>	
Mandinaba SSLC	\$25,000.00
Agege Learning Center/Book Café	\$10,000.00
Fort Worth Book Café	\$15,000.00
<b>Total SSLC/Book Cafe</b>	<b>\$50,000.00</b>
<b>School Project</b>	



Enohia Migrant Fisherman School	\$25,000.00
<b>Total School Project</b>	<b>\$25,000.00</b>
<b>Total Program Expense</b>	<b>\$79,960.00</b>
<b>CAPACITY BUILDING</b>	
<b>Fundraising</b>	
Stationary	\$200.00
Printing	\$200.00
Postage	\$300.00
Signage	\$200.00
Award/Prizes	\$300.00
Facilities Rental	\$1,000.00
Public Relations	\$100.00
<b>Total Fundraising</b>	<b>\$2,300.00</b>
<b>Administration</b>	
Postage	\$200.00
Office Supplies & Stationary	\$250.00
Communication(Phone,Internet,Cell)	\$2,500.00
Insurance	\$1,200.00
Printing and copying	\$350.00
Audited Financial Statements	\$5,000.00
Rent	\$4,200.00
Utilities	\$1,200.00
<b>Total Administration</b>	<b>\$14,900.00</b>
<b>Personnel</b>	
Executive Director	\$35,000.00
Fringe Benefits	\$4,200.00
Intern (part-time)	\$8,000.00
Consultant	\$5,000.00
<b>Total Personnel</b>	<b>\$52,200.00</b>
<b>Total: Capacity Building</b>	<b>\$69,400.00</b>
<b>Total: Expense</b>	<b>\$149,360.00</b>

## **Our Goal is to raise \$150,000**

Major Additions to proposed Cash Budget:

- Increase number of shipment in 2010
- Plan to establish Lifelong Learning Center in Mandinaba
- Plan to establish Agege Learning Center/Book Café
- Plan to establish Fort Worth Book Café
- Identify industry standard salary for administrative personnel to improve organization capacity building for a sustainable program
- (\*) *Executive Director's salary of \$35k includes 12% for overhead and fringe benefit*

## General Governance

The duties of the various bodies within Wings of the Dawn International Institute for Children are determined by the laws of the State of Texas and by the organization governance policy and By-Laws. This organization governance policy is decided by the Board of Directors (Board).

The Board and the Executive Director are responsible for the management of the Organization. Other governance bodies have an assisting and supporting role. WOD prepares annual and interim financial statement according to general accounting principle. The Organization's head office is in Fort Worth, Texas. Presently the Board has not decided to identify an independent auditor due to the current size of the organization. To the maximum extent possible, organization actions and records are taken and recorded appropriately.

The decision-making bodies with responsibility for managing the Organization are the Board and the Executive Director. The operations of the Organization are coordinated through the Executive Director and volunteer members. Day-to-day operational responsibility rests with the project area and assigned volunteer members with related task.

## Board of Directors

The Board under the organization By-Laws and principles manage WOD. According to the organization articles of incorporation, the Board currently consists of 5 volunteered members appointed by vote at the Annual Board Member Meeting. All directors are required to be active with hands-on approach with the organization activities. And to disclose circumstances that might be perceived as a conflict of interest.

- The Board supervises the operation and management of WOD and decides on significant matters relating to strategy, investments, organization and finance.
- The Board is responsible for overseeing management and for the proper organization operations. It is likewise responsible for overseeing the proper supervision of accounting and control of financial matters.
- The Board has defined a working order, the principles of which are published in the annual report and on the organization's website.
- The Board elects a Chairman and a Vice Chairman from among the Board members and appoints the Executive Director and Vice President.
- The Board approves the organizational structure.
- The Board evaluates its performance annually.
- The Board also reviews the By-Laws annually and amends it when required.
- The Board meets regularly on a monthly members meeting at least ten times a year.

## Accountability and Control

1. The President / Executive Director has supervisory responsibility for the treasurer of Wings of the Dawn and each affiliate.
2. All financial books and records are kept in a manner consistent with Generally Accepted Accounting Principles.
3. All financial books and records are open for public inspection at corporate headquarters during normal business hours upon request.
4. An annual report is prepared within three months after the close of each fiscal year. This report will account for the current financial status of the organization and describe all material progress made with the projects of the organization.

A copy of the annual report is sent automatically to each major donor (one who contributes at least \$5,000 in the applicable fiscal year) and to all other donors upon specific request. The annual report is also made available to the general public on the Internet, or at corporate headquarters during normal business hours upon request. The Internet version may be freely downloaded. A non-donor may also have a hard copy of the annual report furnished to him by mail, at cost, upon request.

## **General Mode of Operation**

1. We will stay abreast with available information concerning developments in the field of education in our project countries. This includes compiling and updating our school "shopping list" based on needs determined by both current reports and personal visits by our personnel to the project countries.
2. Each year, at least one Board representative will visit each project country to assess needs, search for new qualified recipients of gathered materials, coordinate distribution of materials shipped, and evaluate and adjust allocations previously made.
3. We will continue soliciting gifts in kind of books and school supplies from donors in the United States.
4. We will continue our program of soliciting monetary contributions from individuals, charitable foundations and contributions of money and service from multinational corporations and NGOs doing business in our project countries in order to finance and arrange for shipping of donated materials and expand our programs.
5. We will continue collected materials of English language from the United States. In this connection, we will continue coordinating with local and multinational NGOs and government authorities in identifying schools and community groups for receipt of the materials we gather and send. Partnering NGOs normally will bear the costs of bringing the shipped materials from the port of destination to the places in the country where they will be ultimately used. Local NGOs will also see to their proper use. Annual visitors from our organization will also verify that materials previously shipped are being properly utilized.
6. Once our program of collecting and sending books and school supplies is well established in one location, the program will be expanded to other communities and countries. Such communities and schools that are candidates for receiving materials from this organization must have a good record of community involvement, physical infrastructure, and a willingness to work out their own problems if necessary without outside help. Ideally, there should be a spirit of pro-activeness in the community.
7. Future projects may include training and assisting in the establishment of school and library organization and construction. However, such projects will not be undertaken until we have the personnel and financial means to institute such new projects while continuing to operate our original book collection and shipping projects.

## Personnel

### Board of Directors:

1. Adeoye E. Otenaike
2. Andrew Lee
3. Rick Giberson
4. Cara Fay
5. Carie Hunter
6. Elizabeth Otenaike

### Advisory Board

1. Steve Uwazie (Netsolutions Ltd. Nigeria)
2. Yinka Adetola (Alied Health Company. USA)
3. Segun Otenaike (S&B ResourcesLtd. Nigeria)
4. Denny Oladipupo (KBO Tax and Accounting, USA)
5. Edwin Okor (Vicbol Ltd. Nigeria)

### Volunteer Members

1. Nicholas Kopay
2. Art Rose
3. Rachel Pittman
4. Funmi Otenaike
5. Melvin Freeman
6. Aaron Otenaike
7. Simone Otenaike
8. Deola Apata
9. Lesley Copeland
10. Ousman Bah
11. Kemi Oyewole

## Sponsors

- Rhythm Band Instrument
- Leadership Worth Following
- KBO Tax and Accounting Services
- Ecropolis
- Google
- Walmart
- Urban Race Street LLC
- Vitran Express
- Manage2Manage Consultant
- Advance Medical Services

## Partners

- Center for Development Support Initiatives (CEDSI) Nigeria
- Women Consortium of Nigeria (WOCON) Nigeria
- Netsolutions Nigeria Ltd
- Vicbol Nigeria Ltd
- S&B Resource
- The Nigerian School Project
- NAFAA Mandinaba, The Gambia
- African Children Libraries (ACL) USA
- African Refugees Foundation (AREF) Nigeria